



Air for life

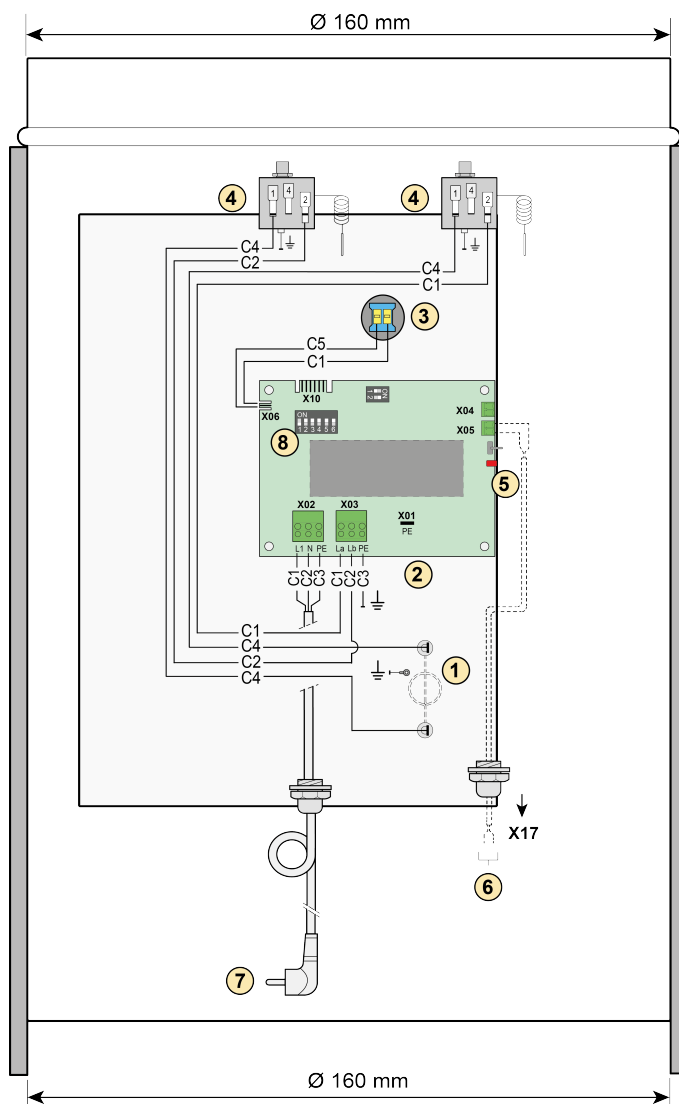
Installation regulations

Flair post- and preheater
English




1 Flair post- and preheater set nr: 243465

The Flair postheater and the Flair preheater are identical to each other and electrically connected to the Flair appliance in the same way.



- 1 = Heating coil
- 2 = PCB type UVP1
- 3 = Temperatur sensor
- 4 = Maximum savety with manual reset temperatur sensor
- 5 = Red LED; lights up when heater is connected with Flair appliance
- 6 = 2-pole eBus connection X17 on Flair appliance
- 7 = Powerplug 230V
- 8 = Dipswitch

- C1 = Brown
- C2 = Bleu
- C3 = Green/yellow
- C4 = Black
- C5 = White

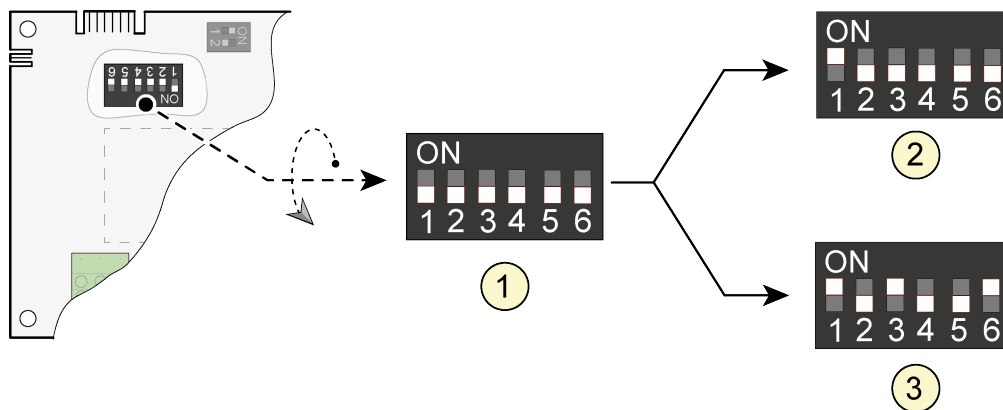
By setting dip switches on the PCB in the heater, the Flair appliance recognizes the connected heater. This Flair heater must always be mounted directly on the connection of the Flair appliance. After installation of the heater, the setting values of the Flair appliance must always be adjusted; for procedure adjustment settings Flair post- and preheater in the setting menu  of the Flair appliance, see the corresponding Flair installation instructions.

2 Setting correct dipswitch setting

At the factory the post- and preheater is supplied with all dip switches on "OFF"; the correct dipswitch setting must always be set by the installer.



Note: If the setting is incorrect, the heater will not function or will function incorrectly!



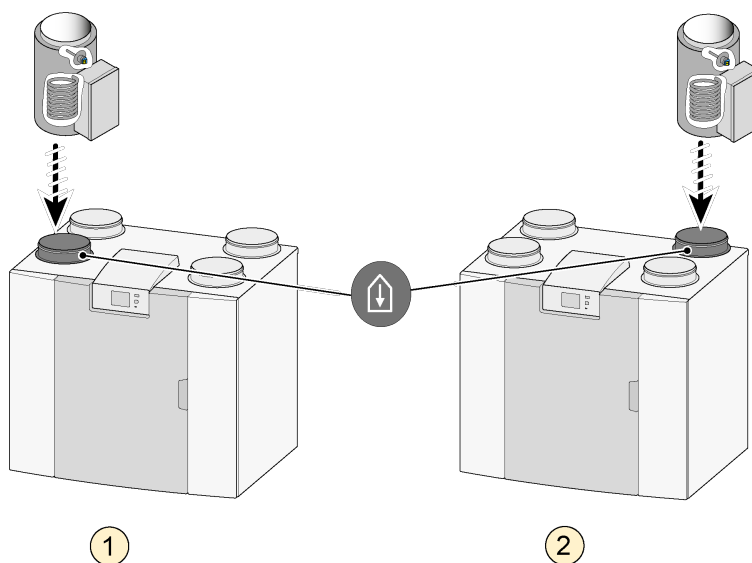
- 1 = Factory setting
- 2 = Dipswitch setting preheater
- 3 = Dipswitch setting postheater

3 Mounting position



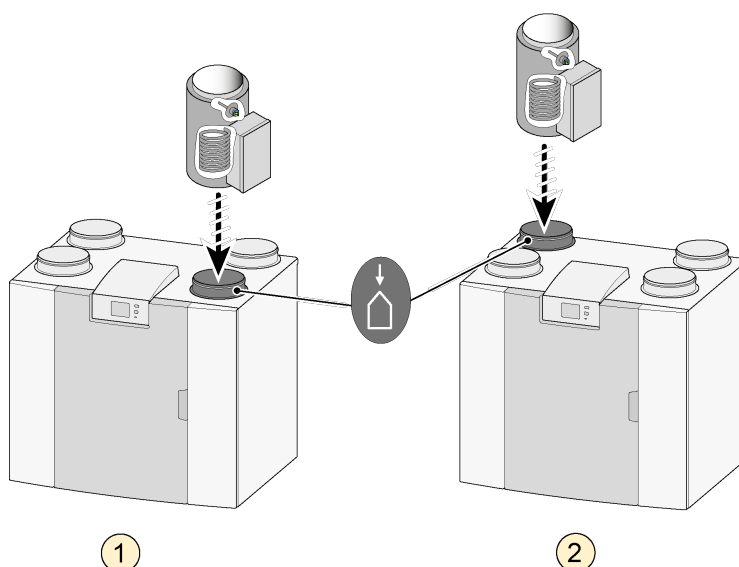
Both the post- and preheater are always placed on the Flair appliance in the same way. The heating coil is always between the Flair appliance and the temperature sensor in the heater! The Flair post- and preheater can be mounted both horizontally and vertically. For horizontal mounting, always mount the connection box upwards in connection with the temperature sensor position!

Flair postheater



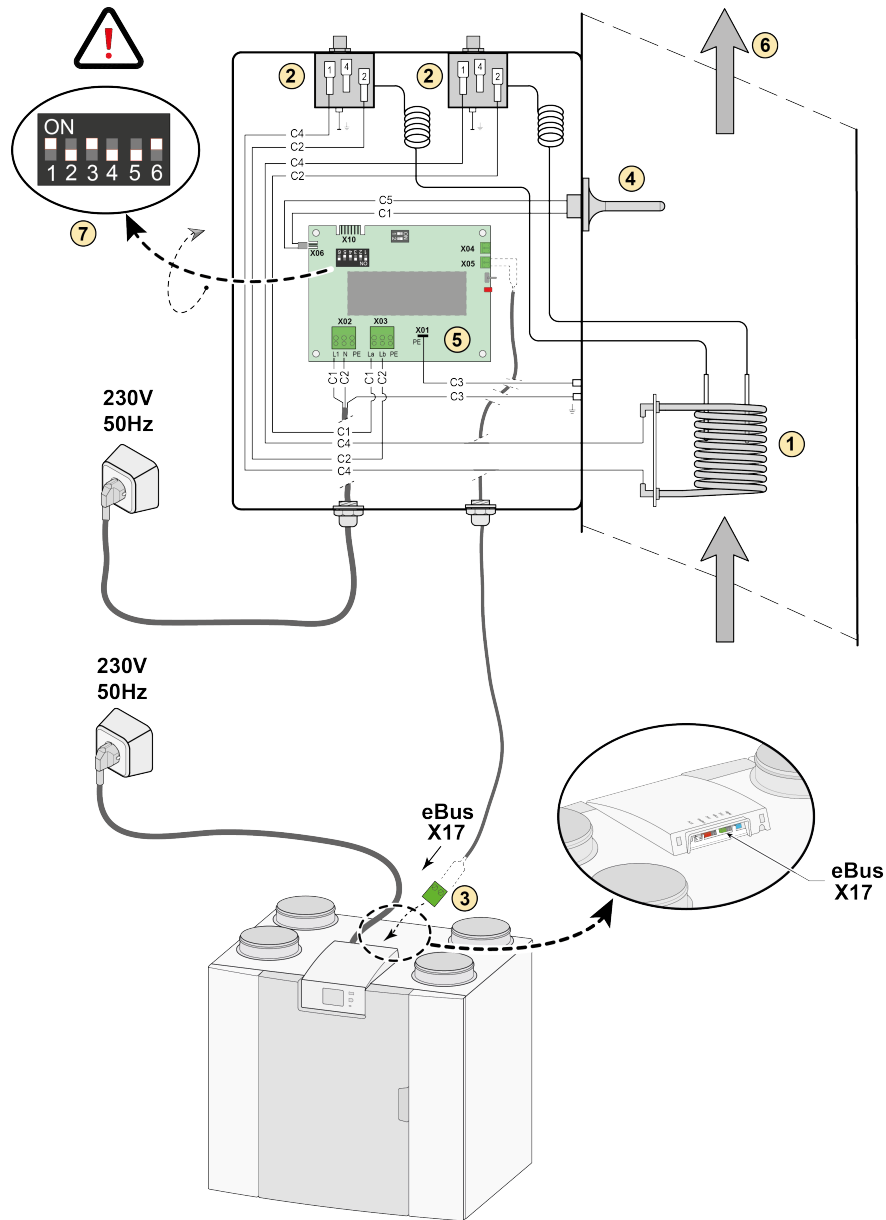
- 1 = Flair appliance left version
- 2 = Flair appliance right version

Flair preheater



- 1 = Flair appliance left version
- 2 = Flair appliance right version

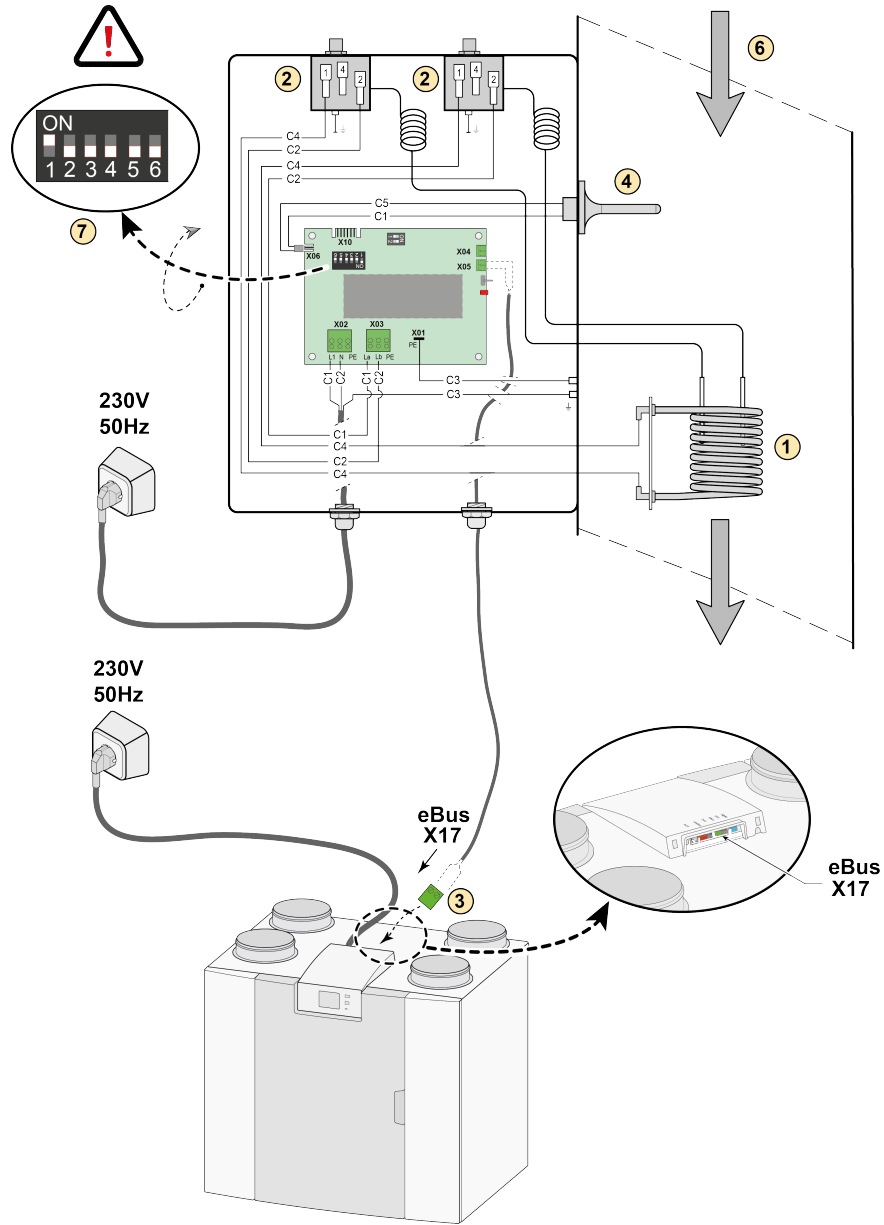
4A Connection Flair postheater with Flair appliance



- 1 = Heating coil
- 2 = Maximum safety with manual reset
- 3 = 2-pole eBus connection X17 on Flair appliance
- 4 = Temperatur sensor
- 5 = PCB type UVP1
- 6 = Airflow direction
- 7 = Dipswitch setting Flair postheater

- C1 = brown
- C2 = blue
- C3 = green/yellow
- C4 = black
- C5 = white

4B Connecting Flair preheater with Flair appliance



- 1 = Heating coil
- 2 = Maximum safety with manual reset
- 3 = 2-pole eBus connection X17 on Flair appliance
- 4 = Temperatur sensor
- 5 = PCB type UVP1
- 6 = Airflow direction
- 7 = Dipswitch setting Flair preheater

- C1 = brown
- C2 = blue
- C3 = green/yellow
- C4 = black
- C5 = white

5 Setting step number in Flair appliance



When a Flair post- and / or preheater is placed on a Flair appliance, this must always be set in the setting menu  of the Flair appliance!

For procedure adjustment settings in this setting menu  of the Flair appliance, see the corresponding Flair installation instructions.



<https://www.brinkclimatesystems.nl/nl-nl/international/home/docsearch>

When setting a preheater, set parameter 5.1 to ON; if a postheater is used, parameter 5.2 must be set to ON and, if required, the postheater temperature can still be set in parameter 5.3.

Preheater			
Step No.	Description	Factory setting	Adjusting range
5.1	Preheater ON and OFF	OFF	ON/ OFF

Postheater			
Step No.	Description	Factory setting	Adjusting range
5.2	Postheater ON and OFF	wył	ON/ OFF
5.3	Temperature postheater	21 °C	15,0 °C - 30,0 °C

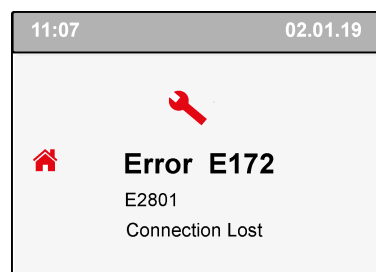
6 Fault

In the event of a fault in the Flair post- or preheater, a fault message will be visible on the display of the Flair appliance.

A LED is mounted on the PCB of the Flair pre- and postheater (for position LED see number 5 → [1 Flair post- and preheater set nr: 243465](#) page 2); this LED flashes when the eBus connection has not yet been established. When connection is established, LED stops flashing. This startup can sometimes take a few minutes.

Error code preheater	
Error No.	Description
E171/ E2700	General error
E171/ E2701	Preheater - connection lost
E171/ E2702	Preheater - sensor error
E171/ E2703	Preheater - element error

Error code postheater	
Error No.	Description
E172/ E2800	General error
E172/ E2801	Postheater - connection lost
E172/ E2802	Postheater - sensor error
E172/ E2803	Postheater - element error



Error code on display Flair appliance

7 Technical information and service

Technical information Flair post- and preheater	
Supply voltage	230 V/ 50 Hz
Weight	2,5 kg
Duct diameter	Ø160 mm
Protection degree	IP20
Rated power	1000 W
Rated current	4,5 A

Service

When ordering parts, in addition to the article code number, please state the type of the heatrecovery appliance, the serial number, the year of production and the name of the part.

Description	Article code
Maximum safety	: 531528
PCB UVP1	: 532807
Temperature sensor	: 531775
Heating coil	: 531463
Mains cable with plug 230V	: 540919

For more information see the Flair installation instructions.



<https://www.brinkclimatesystems.nl/nl-nl/international/home/docsearch>

