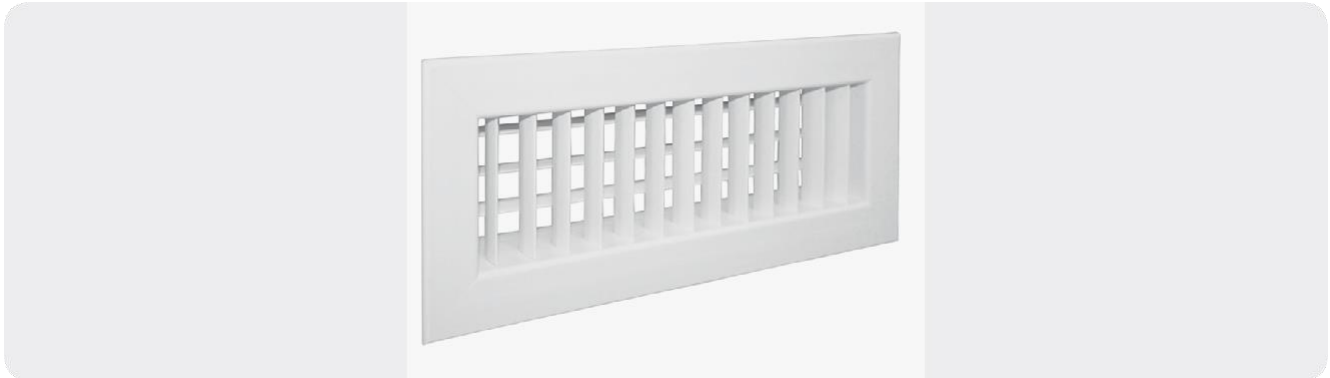


Outlet vents B/01

SUPPLY VENTS SERIES -B/01



CARATTERISTICHE

Nozzle with double row of fins, vertical front and horizontal rear, individually adjustable.

Material of construction: anti-condensation PVC

Color: White RAL 9010

Flap pitch: 20mm

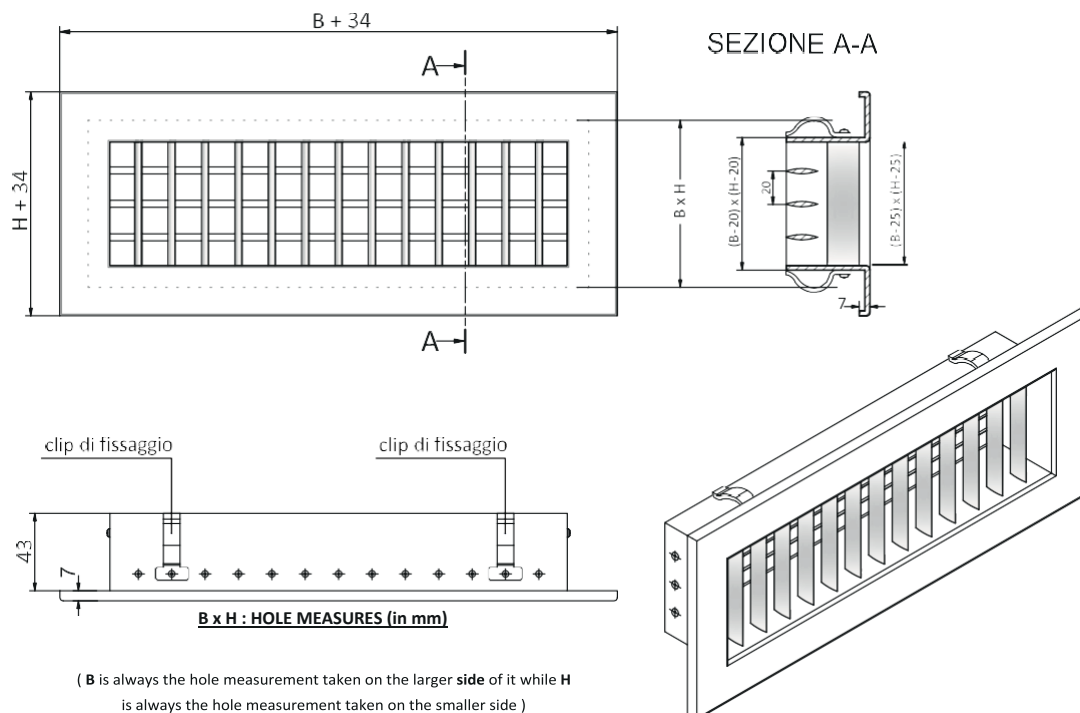
Extinguishing grade: class V0 Operating temperature: -30°C/+60°C Fixing methods: Clips, screws, magnets

ACCESSORIES (optional)

- Calibration dampers series -S/01,
- Galvanized sheet metal counterframes series -C/01,
- Plenum made of -EP/01 series polycarbonate or polyisocyanurate (PAL) or PVC. *

DIMENSIONS

Dimensional drawing (measurements in mm) and axonometry of a PVC vent



(*) For sizes 200x100, 300x100, 400x100 and 140x140, adapters can also be used (see separate TECHNICAL DATA SHEET).

QUICK SELECTION TABLE

Code	Hole size BxH	Effective area [m ²]	Flow rate	Flow rate	Flow rate	Flow rate	Flow rate
	[mm]		(m ³ /h) with v=1m/s Pressure drop: 2 Pa	(m ³ /h) with v=2m/s Pressure drop: 4 Pa	(m ³ /h) with v=2,5m/s Pressure drop: 7 Pa	(m ³ /h) with v=3m/s Pressure drop: 9 Pa	(m ³ /h) with v=4m/s Pressure drop: 15 Pa
-B/01200X100B	200x100	0.0110	40	79	99	119	158
-B/01300X100B	300x100	0.0170	61	122	153	184	244
-B/01400X100B	400x100	0.0230	83	165	207	248	330
-B/01500X100B	500x100	0.0290	104	209	261	313	418
-B/01600X100B	600x100	0.0350	126	252	315	378	504
-B/01300X150B	300x150	0.0270	97	194	243	292	388
-B/01400X150B	400x150	0.0360	130	259	324	389	518
-B/01500X150B	500x150	0.0460	166	331	414	497	662
-B/01600X150B	600x150	0.0560	202	403	504	605	806
-B/01700X150B	700x150	0.0650	234	468	585	702	936
-B/01800X150B	800x150	0.0750	270	540	675	810	1080
-B/01200X200B	200x200	0.0250	90	180	225	270	360
-B/01300X200B	300x200	0.0380	137	274	342	410	548
-B/01400X200B	400x200	0.0520	187	374	468	562	748
-B/01500X200B	500x200	0.0650	234	468	585	702	936
-B/01600X200B	600x200	0.0790	284	569	711	853	1138
-B/01700X200B	700x200	0.0920	331	662	828	994	1324
-B/01800X200B	800x200	0.1060	382	763	954	1145	1526
-B/011000X200B	1000x200	0.1330	479	958	1197	1436	1916
-B/01300X300B	300x300	0.0590	212	425	531	637	850
-B/01400X300B	400x300	0.0810	292	583	729	875	1166
-B/01500X300B	500x300	0.1020	367	734	918	1102	1468
-B/01600X300B	600x300	0.1230	443	886	1107	1328	1772
-B/01800X300B	800x300	0.1660	598	1195	1494	1793	2390
-B/011000X300B	1000x300	0.2080	749	1498	1872	2246	2996
-B/01400X400B	400x400	0.1100	396	792	990	1188	1584
-B/01600X400B	600x400	0.1670	601	1202	1503	1804	2404
-B/01800X400B	800x400	0.2250	810	1620	2025	2430	3240
-B/011000X400B	1000x400	0.2830	1019	2038	2547	3056	4076
VMB01140X140B	140x140	0.0110	40	79	99	119	158

v = velocity through the nozzle (m/s)

Parameters for calculating flow rates: fins inclined 0° - damper closure (if any) = 0% - supply air temperature = 16°C - room air temperature = 26°C.

Correspondence between the value of the crossing velocity v and the noise index NR, indicating the type of installation environments:

- for v = 1 m/s - noise index NR<10 (in all rooms for v.m.c. systems).
- for v = 2 m/s - noise index 10<NR<15 (concert halls, libraries)
- For v = 2.5 m/s - noise index 15<NR<20 (apartments, hotel rooms, hospital rooms)
- For v = 3 m/s - noise index 20<NR<25 (hotel rooms, radio studios)
- for v = 4 m/s - noise index 30<NR<35 (offices in general, restaurants)

NOZZLE ATTACHMENT SYSTEMS (AMONG THEM ALTERNATIVE): CLIPS, SCREWS, MAGNETS

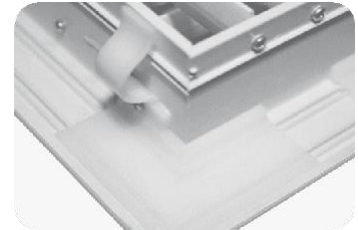
Each of the three systems is not included in the supply price of the nozzle but is quoted separately. Unless otherwise specified by the customer, FITT AGIX provides the standard fastening system, i.e., the one with the clips that are delivered already attached to the vent.

Of the three fixing systems, the one with screws, in particular, corresponds to a vent that is not provided with holes and therefore delivered aesthetically identical to a vent provided with clips or magnets.

Clips (standard, separate)

The set of clips supplied with each nozzle is in a number dependent on the size of the nozzle. In particular:

- to the nozzle having the largest side B measuring less than or equal to 600mm corresponds no.4 clips per set,
- to the nozzle having the largest side B measuring between 700mm and 1000mm corresponds n.6 clips for each set.



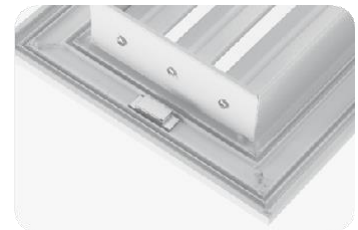
Screws (upon request, separately)

The screws, made of galvanized steel, are supplied painted RAL 9010 on the heads. The vent frame is easily drilled by the customer, who can freely choose the location of the holes. A set of No. 4 screws is provided for any size of vents, except for vents having the largest side equal to 1000mm for which the set provides No. 8 screws.



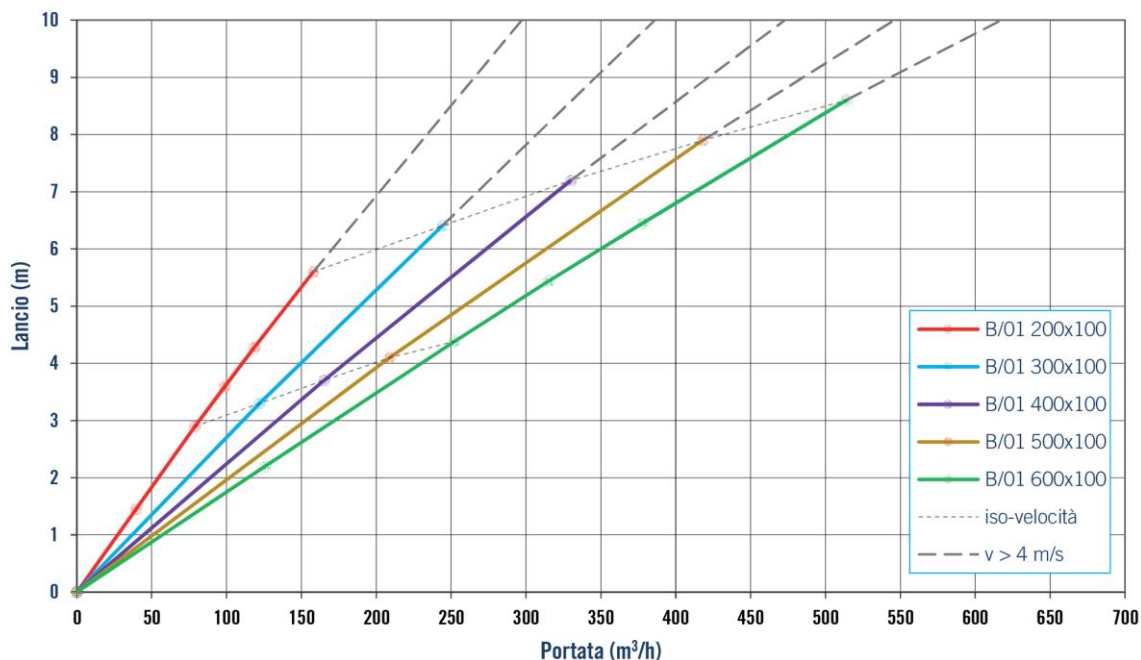
Magnets (upon request, separately)

The magnet attachment system is particularly suitable where there is a need for frequent maintenance. The magnets are supplied already assembled with the nozzle. The set of magnets supplied with each nozzle is in a number dependent on the nominal size of the nozzle:

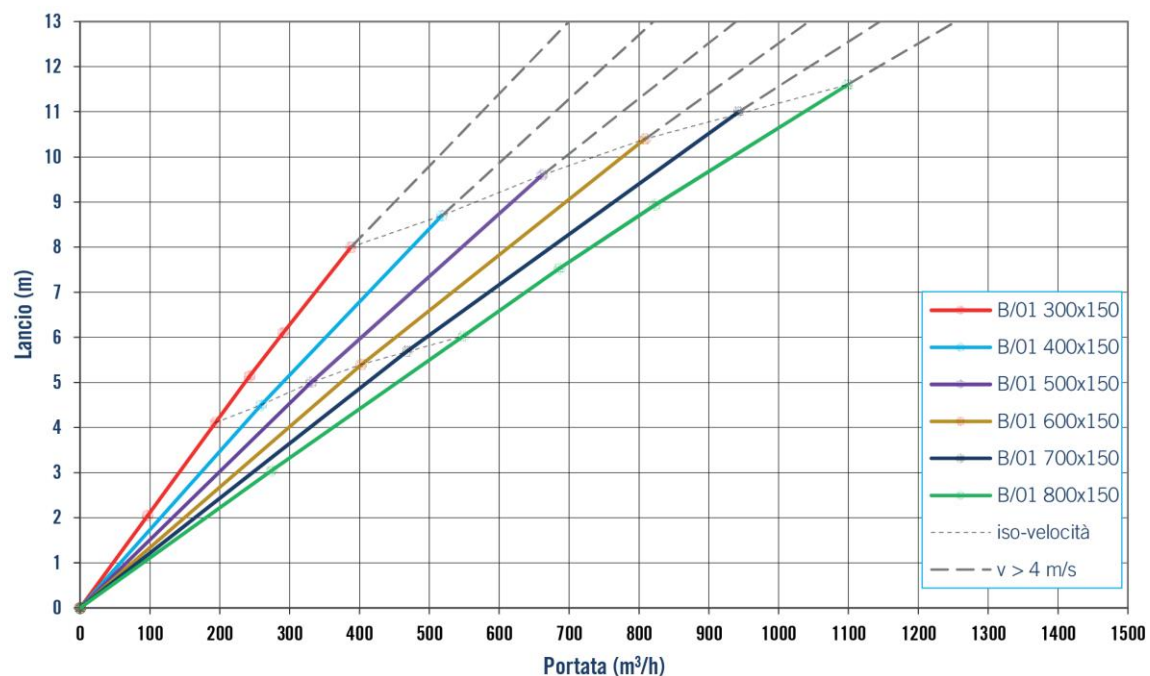


	Set of no.4 magnets	Set of no.6 magnets	Set of no.8 magnets	Set of no.10 magnets
Nom. measurements, nozzle BxH	200x100	600x100	800x150	1000x200
	300x100	600x150	800x200	1000x300
	400x100	700x150	800x300	1000x400
	500x100	500x200	800x400	
	300x150	600x200		
	400x150	700x200		
	500x150	500x300		
	200x200	600x300		
	300x200	600x400		
	400x200			
	300x300			2 magnets
	400x300			
	400x400			

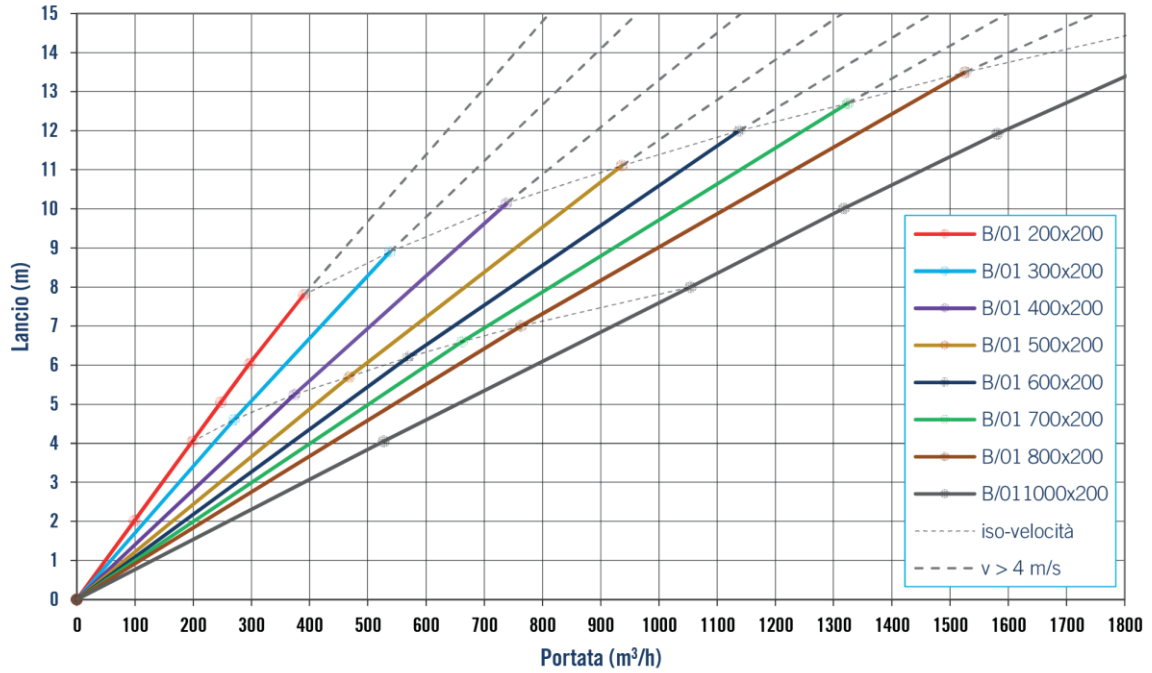
Lancio (in mt, calcolato con velocità terminale $v_t = 0,25$ m/s) delle bocchette B/01 di misura nominale H=100 mm



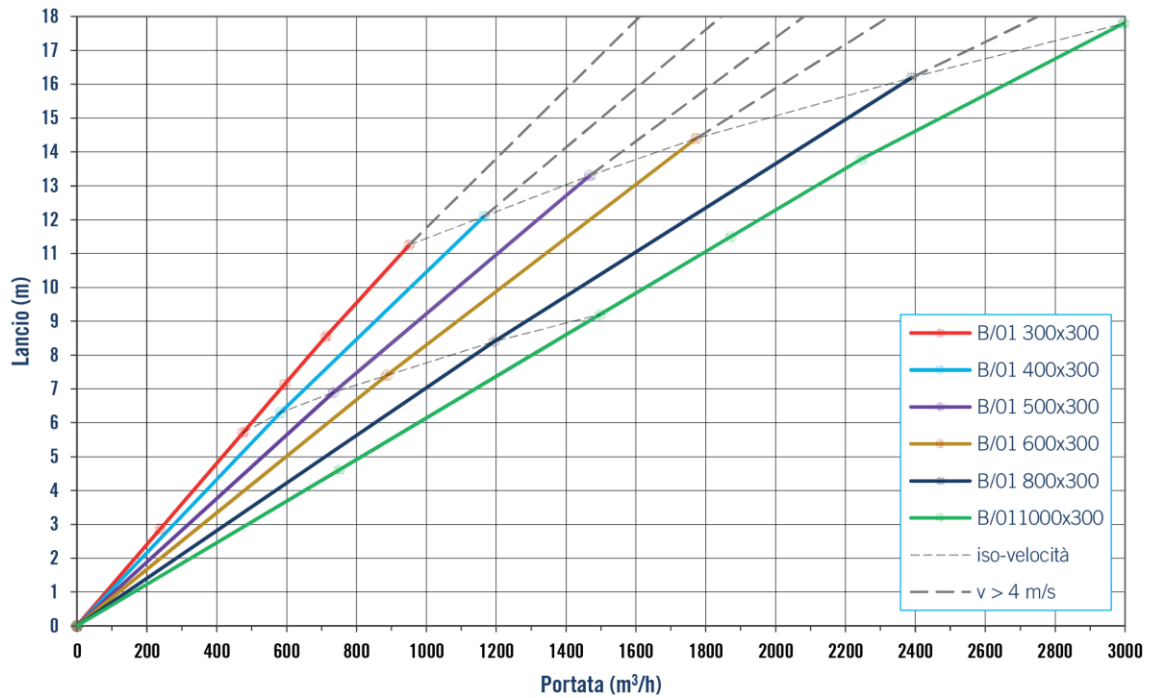
Lancio (in mt, calcolato con velocità terminale $v_t = 0,25$ m/s) delle bocchette B/01 di misura nominale H=150 mm



Lancio (in mt, calcolato con velocità terminale $v_t = 0,25$ m/s) delle bocchette B/01 di misura nominale H=200 mm



Lancio (in mt, calcolato con velocità terminale $v_t = 0,25$ m/s) delle bocchette B/01 di misura nominale H=300 mm



Lancio (in mt, calcolato con velocità terminale $v_t = 0,25$ m/s) delle bocchette B/01 di misura nominale H=400 mm

