

ABS round air inlet/extraction valves

ROUND ABS AIR INLET/EXTRACTION VALVE MOD. VMVEI100



CARATTERISTICHE

Inlet valve, adjustable, with aerodynamic throttling device for channel or flexible tube Ø100.

Material and color

Impact-resistant plastic material (Karbamid and Propen), white RAL 9002, with smooth surface; resistant up to temperature of 100°C.

Use

VMC and air conditioning systems for residential and tertiary.

Manual adjustment

By screwing and unscrewing the central cone.

Special features

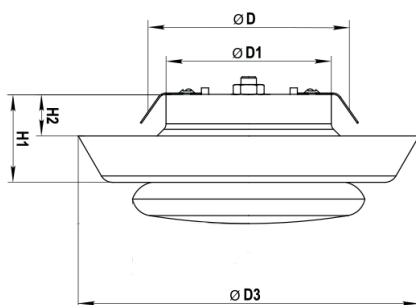
Equipped with Moltopren gasket that prevents the deposit of vent dust on the walls or ceiling.

Connection diameter: Ø 100.

Fixing method

Wall- or ceiling-mounted directly in the duct (with safety springs for fixing on the duct or adapter).

DIMENSIONAL



Code	ØD [mm]	ØD1 [mm]	ØD3 [mm]	H1 [mm]	H2 [mm]	Adjustment turns [0-max]
VMVEI100	100	84	148	44	26	0...20

ADJUSTMENT TABLE OF THE INTERNAL CONE OF THE A VALVE A OF EXTRACTION

Code	Nominal valve Ø	Opening degree	Air flow rate	60 [m³/h]	80 [m³/h]	100 [m³/h]	120 [m³/h]
VMVEI100	Ø 100	6	Pressure drop (Pa)	90	-	-	-
			Pot level. sound (dBA)	35	-	-	-
		12	Pressure drop (Pa)	23	28	58	-
			Pot level. sound (dBA)	25	25-30	35	-
		20 (max apert.)	Pressure drop (Pa)		11	19	31
			Pot level. sound (dBA)		<20	<25	25-30