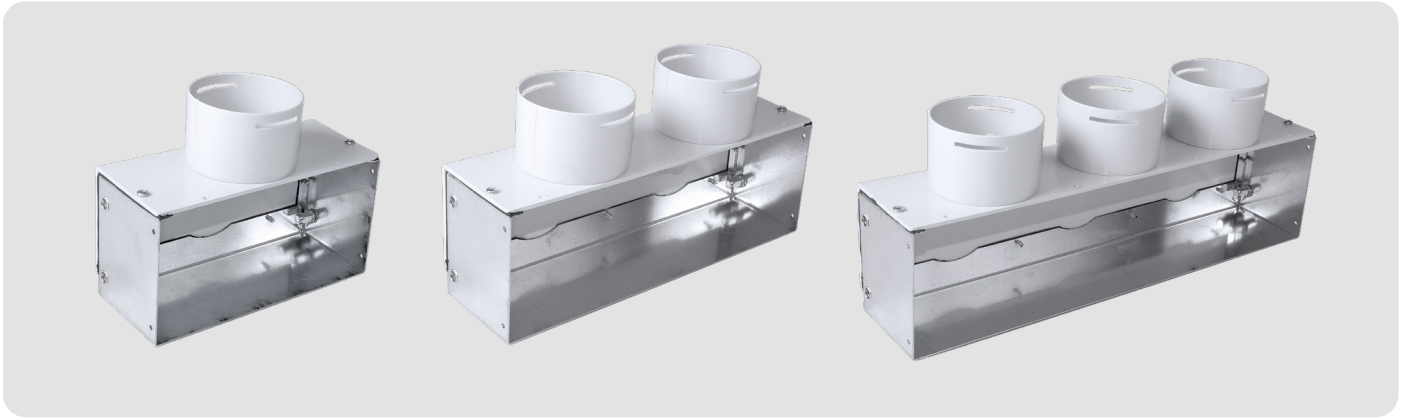


lowered rectangular reversible adapters

LOWERED RECTANGULAR REVERSIBLE ADAPTERS



FEATURES

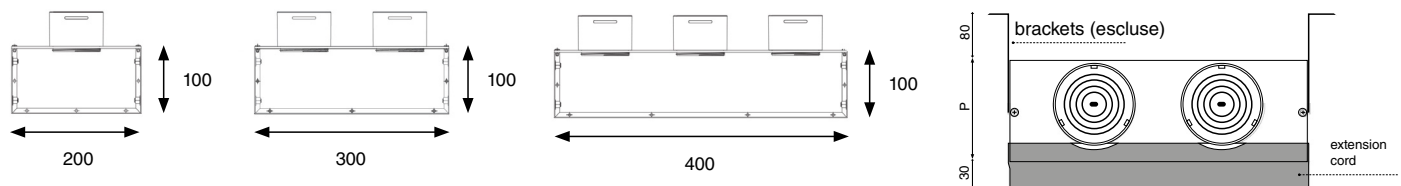
Galvanized sheet metal and PVC adapters with factory side connections but movable to rear position ("reversible"), including grey type collars. Equipped with seals for semi-rigid tubes.

Cardboard jig for dust protection included. Suitable for vents, grilles, Flat diffusers and perforated grilles. Depth reduced to 83 mm

TECHNICAL DATA

Code		VMAD20X10XR75	VMAD30X10XR75	VMAD40X10XR75
Collar diameter	mm	75	75	75
Collars	nr	1	2	3
Grid side dimensions	mm	200x100	300x100	400x100
Max flow rate (air velocity 3 m/s)	mc/h	34	68	102
Depth (P)	mm	83	83	83

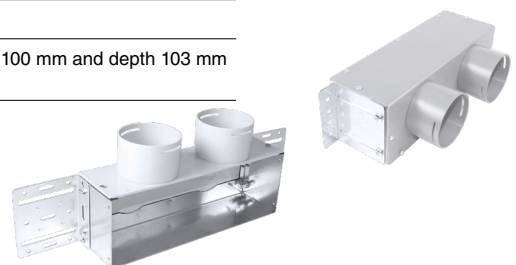
DIMENSIONAL



ACCESSORIES



Code	Description
VMADKITS100	Kit 2 brackets for fixing galvanized sheet metal adapters with height 100 mm and depth 103 mm or 83 mm, or for square adapters 140x140 mm



REV 03/2025