

VMA60-FLATPRO series PVC EXTENSIONS

VMA60-FLATPRO series PVC EXTENSIONS FOR OUTDOOR GRILLES OF "FLAT 60" HRV UNITS



Extension of depth 10 cm - code **VMA60-FLATPRO1**



Extension of depth 5 cm - code **VMA60-FLATPRO5**

FEATURES

Extensions for outdoor grilles of FLAT 60 series HRV units. They can be used, for example, if the wall thickness is less than the minimum 25 cm required for the installation of the grille.

Extensions of 10 cm and 5 cm depth are available.

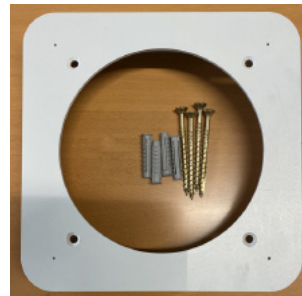
Fixing:

extension consists of a thick. 4 mm PVC "spacer" and a of a thick. 4 mm PVC "grille support base".

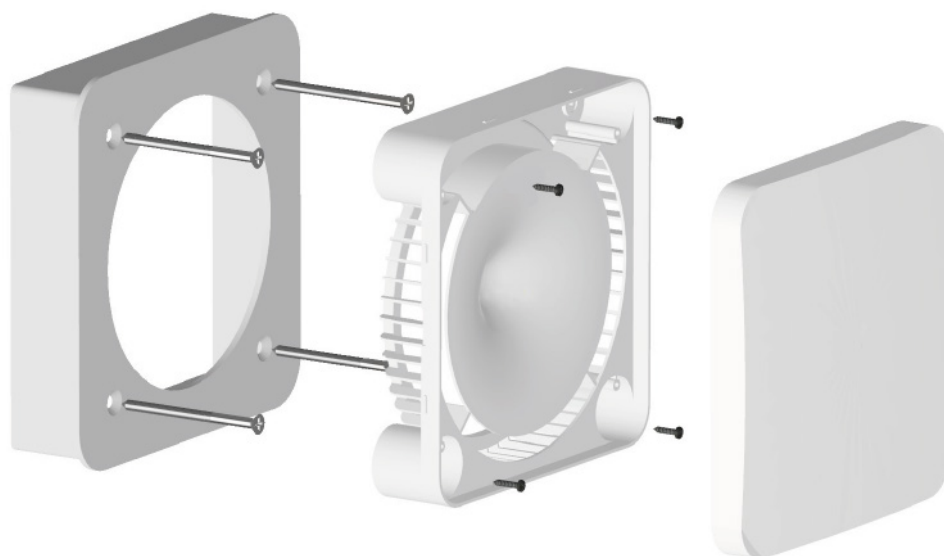
When fastened, the "spacer" will fit snugly against the "base", as the base has a slot for housing: therefore, there is no need for adhesives.

Extension components:

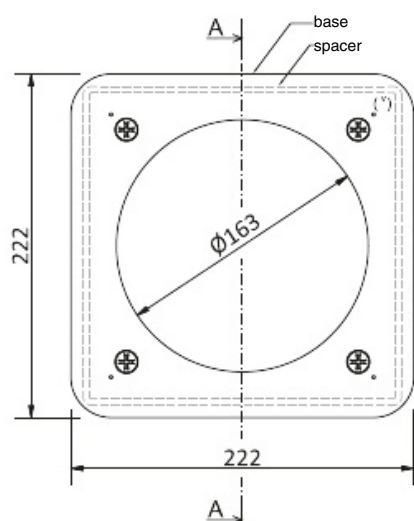
- Anti-condensation PVC extension, color gray-light RAL9035; it can be painted, by the customer, the same color as the wall.
- n. 4 screws L=140 mm (for 10 cm depth) and L=100 mm (for 5 cm depth) for fixing extension to wall; nylon plugs included.



EXPLODED VIEW OF A 5-CM EXTENSION WITH ASSOCIATED BOLTS AND "FLAT 60 GRILLE SECTIONS" (excluded)

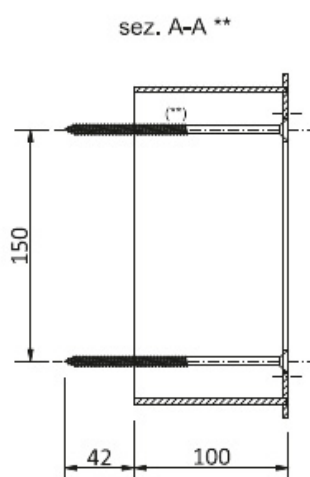


DIMENSIONAL DRAWING



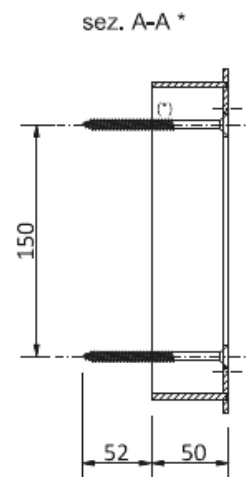
Front view of extensions (measurements in mm)

(*) Ø2 invitation holes for grille fixing screws (excluded)



** P=10 cm extension model

(**) Ø6x140 mm screws supplied



* P=5 cm extension model

(*) Ø5x100 mm screws supplied

EXAMPLE OF APPLICATION (EXTENSION + STANDARD FLAT 60 OUTDOOR GRILLE)

